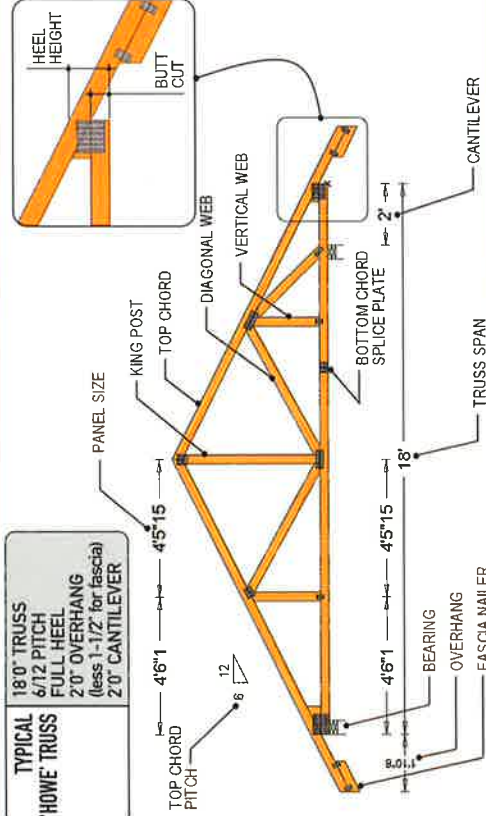


ANGLE	SLOPE FACTOR	HIP DROP	SLOPE	HEEL + BUTT CUT			PLUMB CUT (BY SIZE)				
				1/4"	1-3/4"	3-1/2"	2x4	2x6	2x8	2x10	2x12
9.46	1.01379		2/12	0-3-13	0-5-5	0-7-1	0-3-9	0-5-9	0-7-6	0-9-6	0-11-6
14.04	1.03078	0-1-8	3/12	0-3-14	0-5-6	0-7-2	0-3-10	0-5-11	0-7-8	0-9-9	0-11-10
18.43	1.05409	0-1-9	4/12	0-3-15	0-5-7	0-7-3	0-3-11	0-5-13	0-7-10	0-9-12	0-11-14
22.62	1.08333	0-1-10	5/12	0-4-1	0-5-9	0-7-5	0-3-13	0-5-15	0-7-14	0-10-0	1-0-3
26.57	1.11803	0-1-11	6/12	0-4-3	0-5-11	0-7-7	0-3-15	0-6-2	0-8-2	0-10-6	1-0-9
30.26	1.15770	0-1-12	7/12	0-4-5	0-5-13	0-7-9	0-4-1	0-6-6	0-8-6	0-10-11	1-1-0
33.69	1.20185	0-1-13	8/12	0-4-7	0-5-15	0-7-11	0-4-3	0-6-10	0-8-11	0-11-2	1-1-8
36.87	1.25000	0-1-14	9/12	0-4-10	0-6-2	0-7-14	0-4-6	0-6-14	0-9-1	0-11-9	1-2-1
39.81	1.30171	0-1-15	10/12	0-4-13	0-6-5	0-8-1	0-4-9	0-7-3	0-9-7	1-0-1	1-2-10
42.51	1.35657	0-2-1	11/12	0-5-0	0-6-8	0-8-4	0-4-12	0-7-7	0-9-13	1-0-9	1-3-4
45.00	1.41421	0-2-2	12/12	0-5-3	0-6-11	0-8-7	0-4-15	0-7-12	0-10-4	1-1-1	1-3-15

How to read measurements: (1-2-3) = (feet-inches-1/4th) ↘

TYPICAL
"HOWE" TRUSS
18'0" TRUSS
6/12 PITCH
FULL HEEL
2'0" OVERHANG
(less 1'-1/2" for fascia)
2'0" CANTILEVER



15108 - 131 Ave
Edmonton, AB
T5V 1S8

T 780.452.6288
F 780.452.6817

info@westek.ca
www.westek.ca



SERVICE, QUALITY AND PRICES YOU CAN BUILD WITH